



40LCS-W Series

Chilled Water Fan Coil Unit

66,690-303,570 BTU/H



40LCS006W-010W



40LCS012W-024W



BBAIR
GROUP
www.bbairtrading.com



World's No.1 Air Conditioning Expert

www.carrier.co.th

Number Nomenclature

1	2	3	4	5	6	7	8	9	10	11	12	Digit Number
4	0	L	C	S	0	0	6	W	3	R	H	Standard Unit

40LCS " Carrier "

Duct Packaged
With Belt Drive
Supply 380V / 3Ph / 50Hz.

(IAQ-Medium Filter
Merv14 PM2.5)
CHW Fan Coil Unit

Size / Nominal Cooling Capacity

- 006 = x 10,000BTU
- 008 = x 10,000BTU
- 010 = x 10,000BTU
- 012 = x 10,000BTU
- 015 = x 10,000BTU
- 018 = x 10,000BTU
- 024 = x 10,000BTU

Coil Type

- W = Chilled Water Coil
- X = Direct Expansion Coil

Unit type

- H = Horizontal
- S = Short Horizontal

Coil connection

- R = Right coil connection (Std.)
- L = Left coil connection

Number of Row (Coil)

- 3 = 3Rows
- 4 = 4Rows

Operation Feature



40LCS006W-010W



40LCS012W-024W

HIGH PERFORMANCE, ENERGY SAVINGS, PM2.5 & COMFORT

Carrier's versatile belted fan coil units satisfy design requirements :

With Carrier's 40LCS series fan coil units, Selection of 7 sizes covers nominal capacities from 2,100 to 8,000 cfm.

These units are ideal for applications with a large common area such as restaurants, airports, sports arenas, stadiums, private boxes, gymnasiums, exercise areas, locker rooms, atriums and foyers, auditoriums, shopping malls, and casinos, to name a few. Carrier 40LCS series requires very little space and is easy to install. Piping, drain and wiring connections are readily accessible to save installation time and field labor expense.

Give you design and equipment location flexibility

- Wide range of popular capacities for 2,100 - 8,000 cfm.
- Up to 7 sizes with Cabinet units.
- Select 3 or 4 row coils

Carrier fan coils save you service and maintenance expense

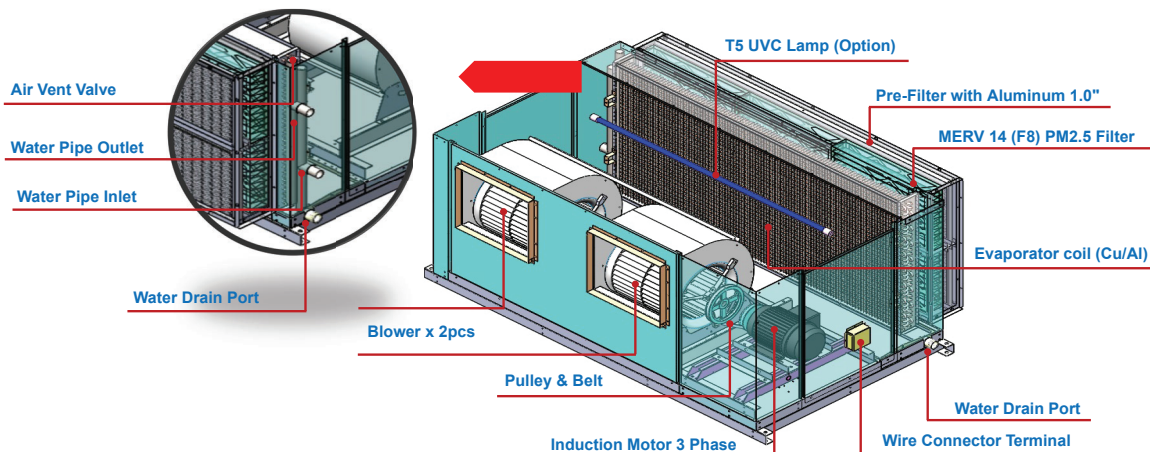
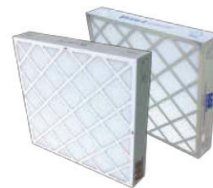
- Insulated drain pan
- Easy access to components
- Rugged construction
- Factory leak test
- Long life, heavy duty bearings

Select Carrier fan coils for easy, low cost installation

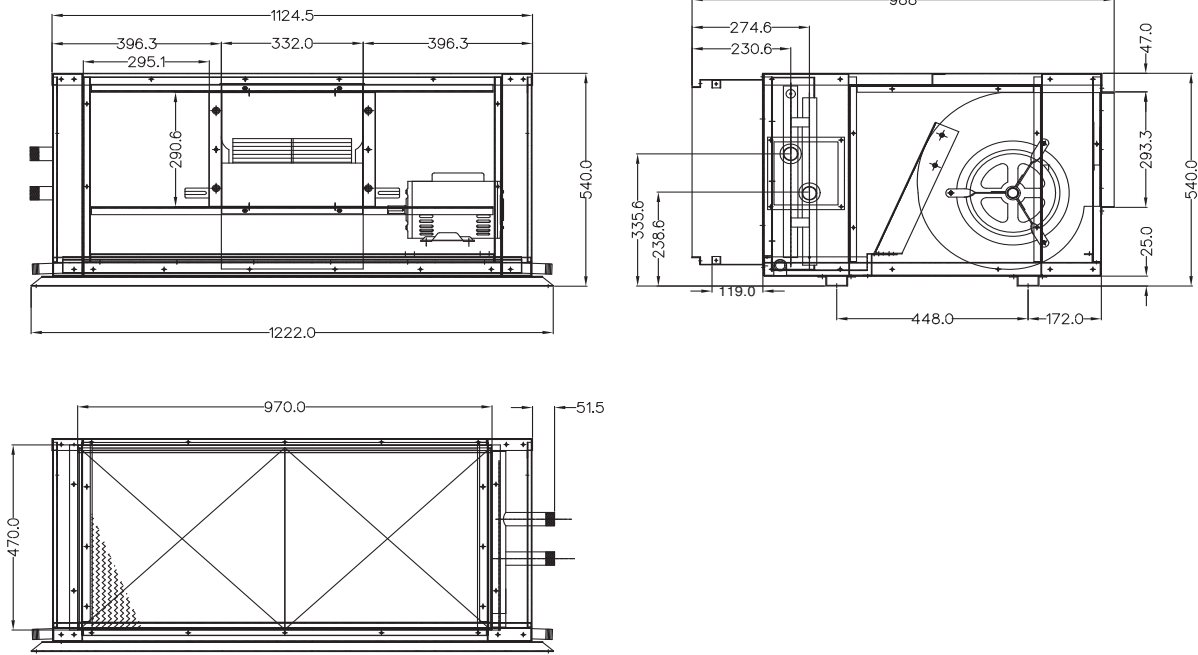
- Easy wiring, piping connections
- Mounting holes, slots speed hanging
- Requires no expensive ductwork
- Ideal for new construction or renovation

MERV 14 (F8) PM2.5 Filter

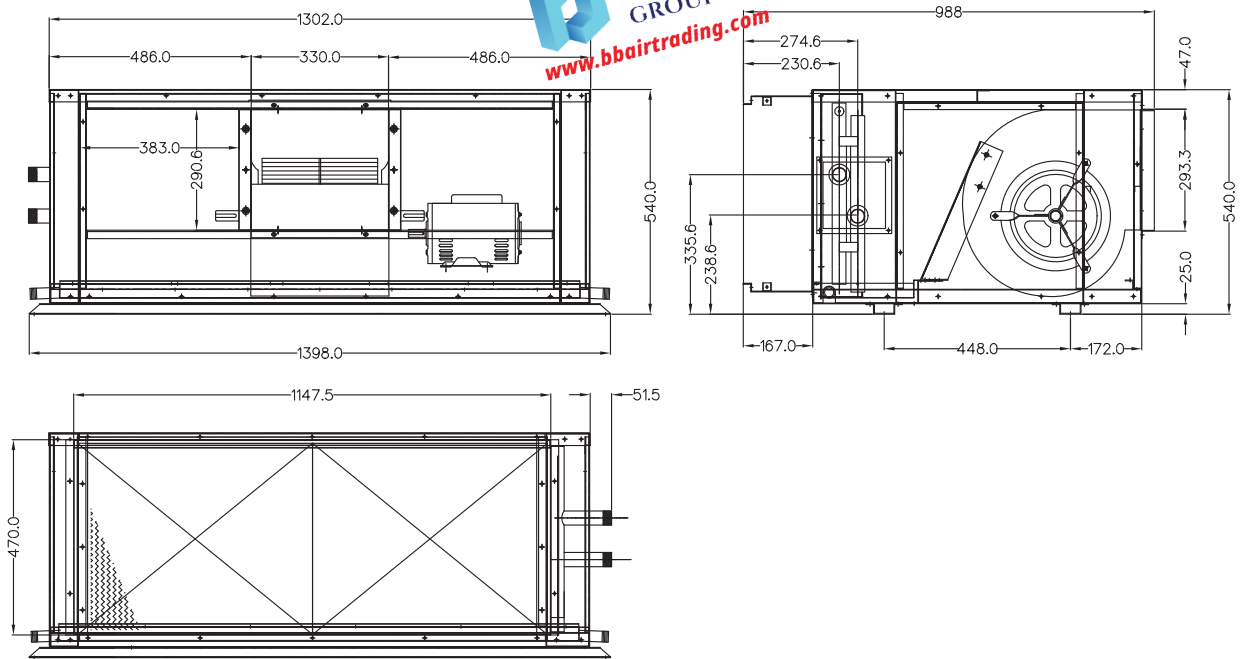
- MERV 14 (F8) PM2.5 filter for high quality air supply, creates more comfort and healthy environment.



Unit dimensions

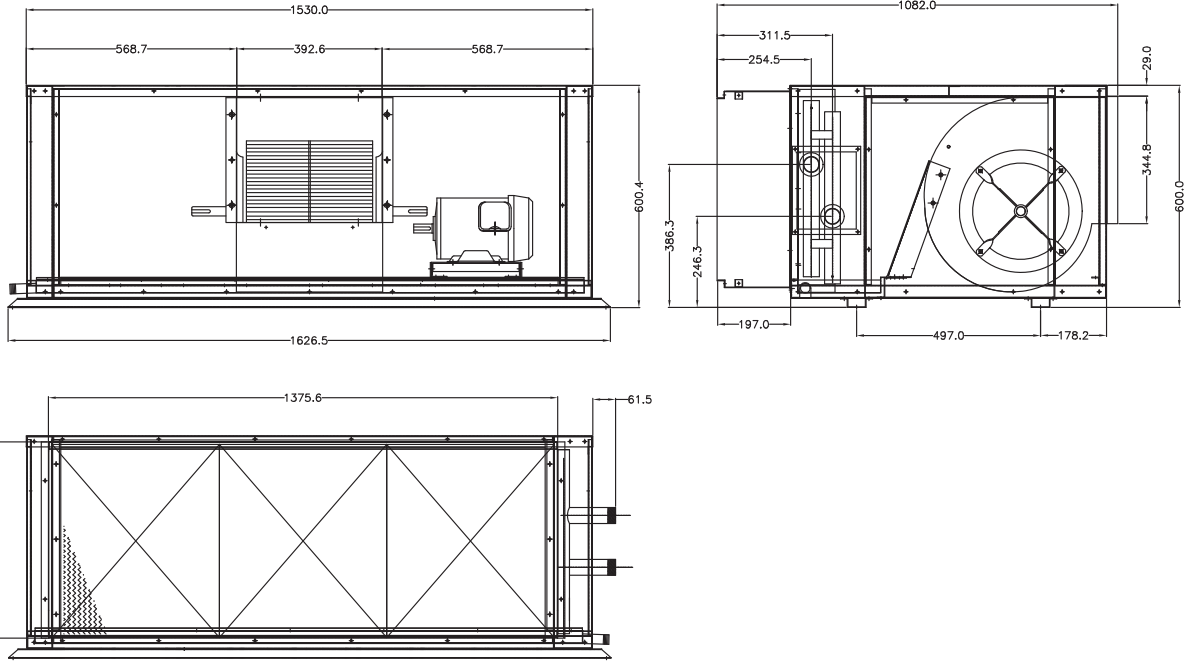


Model: 40LCS006W

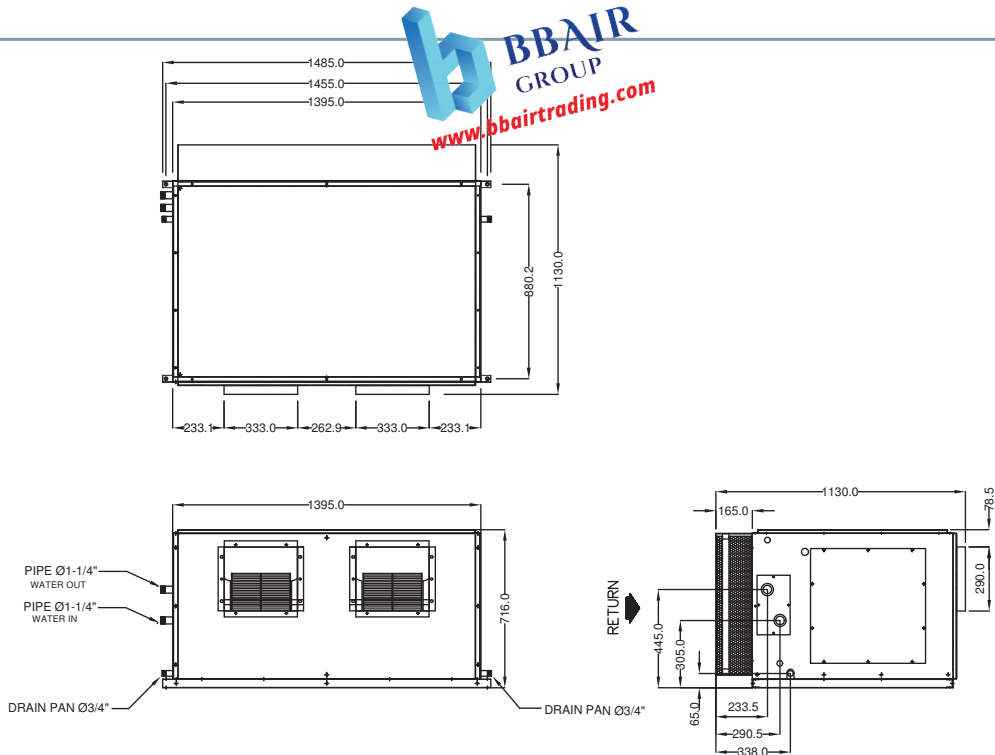


Model: 40LCS008W

Unit dimensions



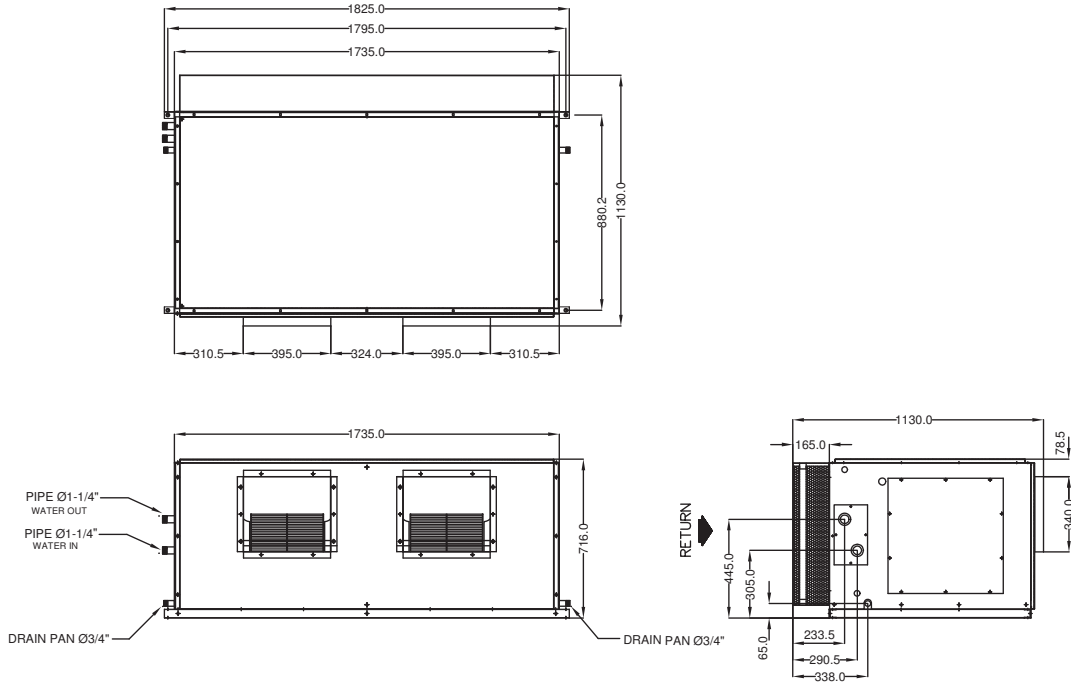
Model: 40LCS010W



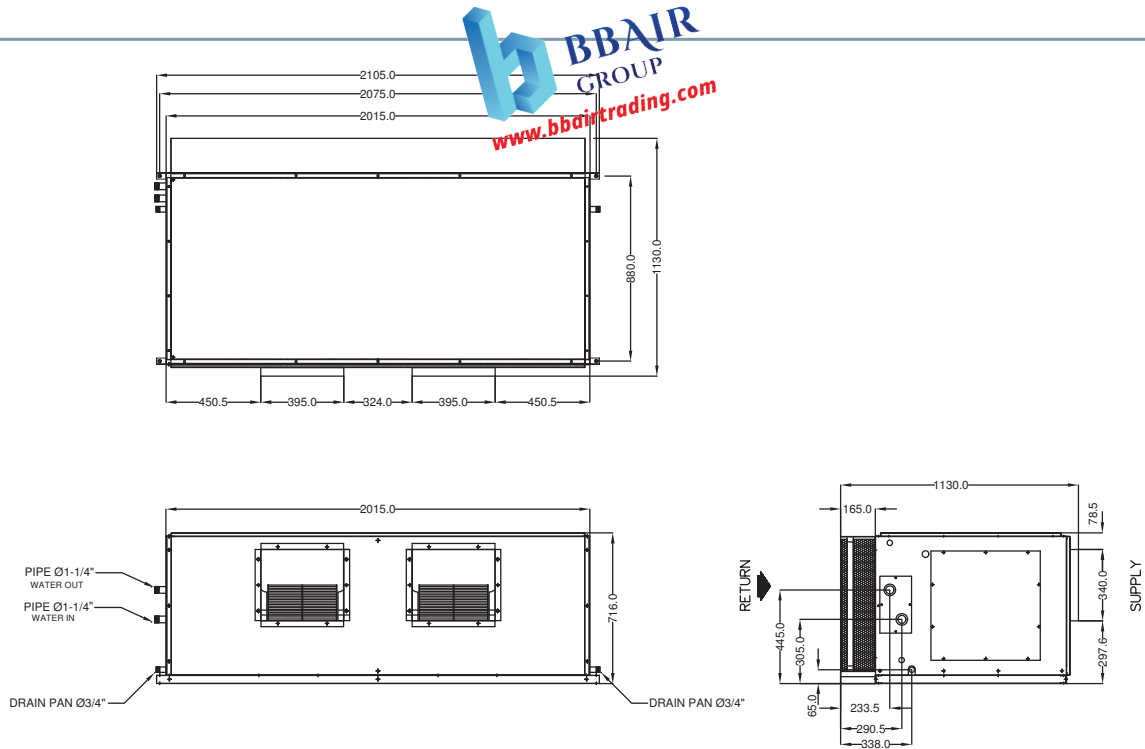
Model: 40LCS012W



Unit dimensions



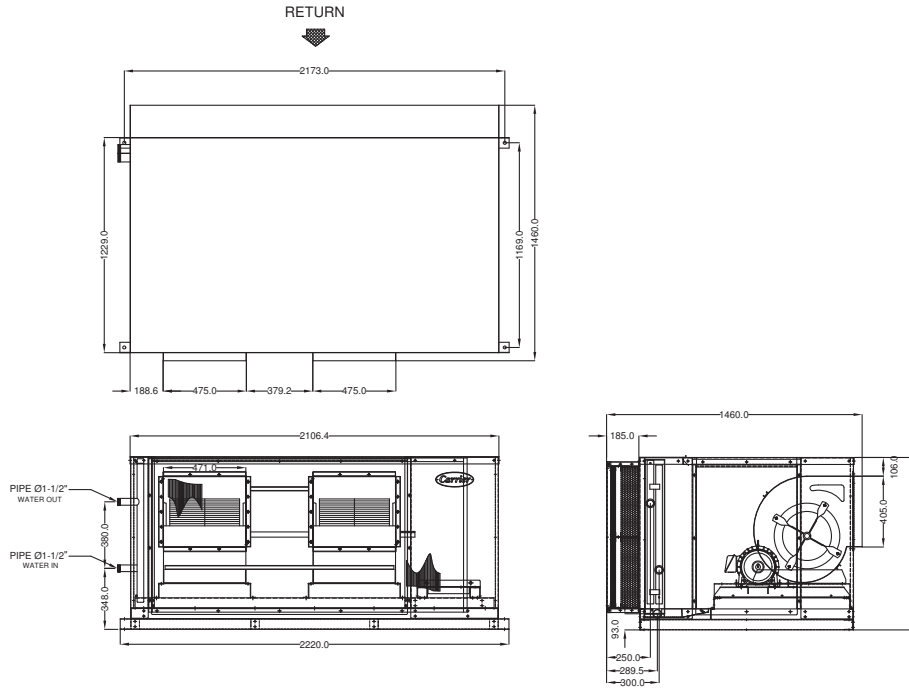
Model: 40LCS015W



Model: 40LCS018W



Unit dimensions



Model: 40LCS024W

Fan Performance



Model	Air Flowrate (cfm)	Internal Pressure Drop (in.wg)	Total Static Pressure (in.wg)											
			1.0		1.2		1.4		1.6		1.8		2.0	
			Fan Speed (rpm)	Power Consumption (kW)	Fan Speed (rpm)	Power Consumption (kW)	Fan Speed (rpm)	Power Consumption (kW)	Fan Speed (rpm)	Power Consumption (kW)	Fan Speed (rpm)	Power Consumption (kW)	Fan Speed (rpm)	Power Consumption (kW)
40LCS006-3	1,800	1.38	909	0.40	987	0	1,066	1	1,149	1	1,233	1	1,318	1
	2,100	1.43	921	0.53	999	1	1,074	1	1,141	1	1,207	1	1,277	1
40LCS006-4	1,800	1.45	909	0.40	987	0	1,066	1	1,149	1	1,233	1	1,318	1
	2,100	1.53	921	0.53	999	1	1,074	1	1,141	1	1,207	1	1,277	1
40LCS008-3	2,300	1.41	938	0.62	1,009	1	1,080	1	1,151	1	1,214	1	1,273	1
	2,600	1.45	967	0.78	1,034	1	1,099	1	1,161	1	1,224	1	1,288	1
40LCS008-4	2,300	1.50	938	0.62	1,009	1	1,080	1	1,151	1	1,214	1	1,273	1
	2,600	1.57	967	0.78	1,034	1	1,099	1	1,161	1	1,224	1	1,288	1
40LCS010-3	3,200	1.42	798	0.82	868	1	934	1	992	1	1,050	1	1,112	1
	3,500	1.46	806	0.96	874	1	939	1	1,000	1	1,055	1	1,108	2
40LCS010-4	3,200	1.51	798	0.82	868	1	934	1	992	1	1,050	1	1,112	1
	3,500	1.56	806	0.96	874	1	939	1	1,000	1	1,055	1	1,108	2
40LCS012-3	3,500	1.41	943	0.83	1,025	1	1,111	1	1,201	1	1,296	1	1,391	2
	4,000	1.46	951	1.04	1,037	1	1,112	1	1,184	1	1,241	2	1,325	2
40LCS012-4	3,500	1.49	943	0.83	1,025	1	1,111	1	1,201	1	1,296	1	1,391	2
	4,000	1.57	951	1.04	1,037	1	1,112	1	1,184	1	1,241	2	1,325	2
40LCS015-3	4,500	1.41	819	1.06	1,046	1	1,027	2	-	-	-	-	-	-
	5,100	1.47	816	1.25	893	1	979	2	1,068	2	1,159	2	-	-
40LCS015-4	4,500	1.50	819	1.06	1,046	1	1,027	2	-	-	-	-	-	-
	5,100	1.58	816	1.25	893	1	979	2	1,068	2	1,159	2	-	-
40LCS018-3	5,500	1.43	822	1.39	893	2	965	2	1,044	2	1,131	2	1,217	3
	6,000	1.46	826	1.59	900	2	965	2	1,030	2	1,100	3	1,176	3
40LCS018-4	5,500	1.51	822	1.39	893	2	965	2	1,044	2	1,131	2	1,217	3
	6,000	1.57	826	1.59	900	2	965	2	1,030	2	1,100	3	1,176	3
40LCS024-3	7,500	1.43	709	1.78	776	2	838	2	897	3	914	3	977	3
	8,000	1.46	712	1.98	776	2	838	3	896	3	904	3	961	3
40LCS024-4	7,500	1.53	709	1.78	776	2	838	2	897	3	914	3	977	3
	8,000	1.56	712	1.98	776	2	838	3	896	3	904	3	961	3

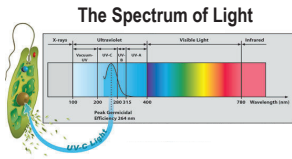
Accessories (Optional)

UV Lamps

In response to the current coronavirus epidemic situation, sterilization option using UltraViolet (UV) is available for FCU products.

UV light for kill germs in a wide range of wavelengths between 200 to 400 (nm) which is highly effective in killing bacteria and reduces the formation of viruses by breaking down the molecular bonds that hold their DNA and RNA together.

UV-C at this wavelength, is the wavelength that DNA can absorb well can be punched and disabled their growth. By destroying their DNA sequence When doing this, the virus will lose their ability to reproduce.



UV-C-Radiation used for disinfection is most effective at a wavelength of 253.7 nm.



UV-C rays are not found in nature because these rays cannot pass through the ozone layer to the earth's surface. The use of this type of radiation to destroy the infection requires a source of radiation. Including mercury lamps

Intelligent Thermostat & Starter



Variable Speed Drive (VSD)
CARR-INTVSDITS003X (2-3 HP)
CARR-INTVSDITS075X (2-7.5 HP)
CARR-INTVSDITS010X (2-10 HP)



Variable Speed Drive (VSD)
CARR-INTVSDITS015X (15 HP)
CARR-INTVSDITS020X (15-20 HP)



External display unit (Optional)

INTELLIGENT THERMOSTAT & VSD Starter

MODEL	CARR-INTVSDITS003X	CARR-INTVSDITS075X	CARR-INTVSDITS010X	CARR-INTVSDITS015X	CARR-INTVSDITS020X
POWER	2 - 3 HP (1.5 - 2.2 KW)	2 - 7.5 HP (1.5 - 5.5 KW)	2 - 10 HP (1.5 - 7.5 KW)	15 HP (11.2 KW)	15 - 20 HP (11.2 - 15 KW)
VOLTAGE	3 Phase , 380 - 415 VAC	3 Phase , 380 - 415 VAC	3 Phase , 380 - 415 VAC	3 Phase , 380 - 415 VAC	3 Phase , 380 - 415 VAC
STARTING TYPE	VSD	VSD	VSD	VSD	VSD
OVER / UNDER VOLTAGE	20%	20%	20%	20%	20%
AMBIENT OPERATING TEMPERATURE	10 - 50 °C	10 - 50 °C	10 - 50 °C	10 - 50 °C	10 - 50 °C
INDICATOR	7 - segment LED Display	7 - segment LED Display	7 - segment LED Display	7 - segment LED Display	7 - segment LED Display
DIMENSION (W x L x H)	493 X 121 x 377 mm.	493 X 121 x 377 mm.	493 X 121 x 377 mm.	490 X 220 x 500 mm.	490 X 220 x 500 mm.

INTELLIGENT THERMOSTAT & STARTER , Direct on line Star - Delta

MODEL	CARR-INTITS05X	CARR-INTITSY10X
POWER	0.75 - 5 HP (0.55 - 3.7 KW)	5 - 10 HP (3.7 - 7.5 KW)
VOLTAGE	3 Phase , 380 - 415 VAC	3 Phase , 380 - 415 VAC
STARTING TYPE	DOL	Star - delta
ACCURACY	± 1 %	± 1 %
OVER / UNDER VOLTAGE SETTING	5 - 20 %	5 - 20 %
VOLTAGE UNBALANCE SETTING	3 - 20 %	3 - 20 %
MACNETIC CONTACT RATING (AC-3)	9 Amp.	16 Amp.
PHASE PROTECTION MODE	Auto / Manual	Auto / Manual
AMBIENT OPERATING TEMPERATURE	10 - 50 °C	10 - 50 °C
INDICATOR	7 - segment LED Display	7 - segment LED Display
DIMENSION (W x L x H)	322 X 322 x 93 mm.	493 X 121 x 377 mm.



CARR-INTITS05X
(0.75 - 5 HP) Direct on line



CARR-INTITSY10X
(5 - 10 HP) Star - Delta



External display unit (Optional)

บริษัท แคนเรียร์ (ประเทศไทย) จำกัด
1858/63-74 ชั้น 14, 15
ถ.เทพรัตน กม. 4.5 แขวงบางนาใต้
เขตบางนา กรุงเทพฯ 10260
โทร. 0-2090-9999 แฟกซ์: 0-2751-4778

Carrier (Thailand) Ltd.
1858/63-74 , 14th, 15th Floor,
Debaratna Road, Km.4.5, Bangna Tai,
Bangna Bangkok 10260 Thailand
Tel. 0-2090-9999 Fax: 0-2751-4778

บริษัท ขอสงวนสิทธิ์ที่จะเปลี่ยนแปลงรายละเอียดข้างต้น โดยมีต้องแจ้งให้ทราบล่วงหน้า
Carrier reserves the right to make changes in specifications without prior notice.



YOUR CARRIER MAN :