



# HFCE

*Chilled Water Fan Coil Units  
Concealed Type 400-2,000 CFM  
HFCE Series 50Hz*

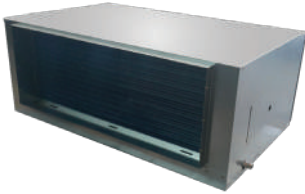
TRANE  
TECHNOLOGIES



**b** BBAIR  
GROUP  
[www.bbairtrading.com](http://www.bbairtrading.com)

# HFCE – Chilled water fan coil unit with cabinet casing

Trane brand new ceiling concealed model designed with cabinet plenum (totally enclosed casing) to serve specific requirement for concealed type installation. Commonly used for low static application (HFCE04-12).



## UNIT CASING

Units casing is constructed of galvanized steel. Interior surface of unit panels are acoustically and thermally insulated with polyethylene foam.

## FANS

Fans are double width, double inlet, multiblades centrifugal type. All fans are statically and dynamically balanced and tested from factory.

## COILS

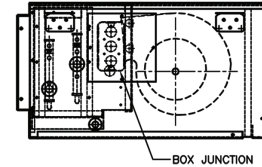
Coils are 3-row type as standard design together with 4-row design as option. High efficient aluminum fins are mechanically bonded to seamless copper tubes. All coils are specially designed and circuited for chilled water use and are pressure leak tested at 380 psig.

## FAN MOTOR

3-speed fan motor with direct drive type is provided for ease of control and operation. Thermostat with three fan speed can be used to control desired fan speed at high, medium or low speed.

## DRAIN PAN

3-layer drain pan is integrally attached to coil casings and ended with drain hose. Drain pan covers the entire coil. The outer side of drain pan is galvanized steel to protect drain pan.



## General Data HFCE 50 Hz

### Product Specification

MODEL	HFCE04	HFCE06	HFCE08	HFCE10	HFCE12	HFCE14	HFCE16	HFCE18	HFCE20	
Rated - Volts/Ph/Hz	220-240/1/50	220-240/1/50	220-240/1/50	220-240/1/50	220-240/1/50	220-240/1/50	220-240/1/50	220-240/1/50	220-240/1/50	
<b>System Data</b>										
Nominal Airflow	cfm	400	600	800	1,000	1,200	1,400	1,600	1,800	2,000
Cooling Capacity	Btu/h	12,000	18,000	24,000	30,000	36,000	42,000	48,000	54,000	60,000
Water Inlet Connection Size	in	5/8	5/8	5/8	5/8	5/8	3/4	3/4	3/4	3/4
Water Outlet Connection Size	in	5/8	5/8	5/8	5/8	5/8	3/4	3/4	3/4	3/4
Water Connection Size		Brazed	Brazed	Brazed	Brazed	Brazed	Brazed	Brazed	Brazed	Brazed
<b>INDOOR COIL</b>										
Fin Type		Corrugate								
Fins per inch*										
3-Row coil		12	12	15	18	18	14	14	14	14
4-Row coil		14	15	16	15	15	16	16	16	16
Drain Connection Size	in	1/2	1/2	1/2	1/2	1/2	1/2	1/2	1/2	1/2
<b>FAN</b>										
Fan Type		Double Inlet Centrifugal Forward Curved Fan								
Qty		2	2	2	2	2	2	2	2	2
Drive Type		Direct	Direct	Direct	Direct	Direct	Direct	Direct	Direct	Direct
<b>FAN MOTOR (STANDARD)</b>										
Motor Output Power	W	13	42	59	162	186	399	399	450	450
No. of Speed		3	3	3	4	4	4	4	4	4
RLA	A	0.20	0.45	0.55	1.35	1.35	3.11	3.11	3.94	3.94
<b>DIMENSION (HxWxD)</b>										
Uncrated with plenum (Net)	mm	265 x 824 x 510	278 x 940 x 510	278 x 1050 x 510	304 x 1177 x 510	330 x 1240 x 608	433 x 1,095 x 740	433 x 1,095 x 740	433 x 1,248 x 670	433 x 1,248 x 670
<b>WEIGHT</b>										
3-Row Uncrated (Net)	kg	26	30	32	42	46	54	54	62	62
4-Row Uncrated (Net)	kg	27	32	32	42	48	57	57	66	66

- \*Note : 1. 3-Row coil is standard coil
- 2. 4-Row coil is optional coil
- 3. Unit dimensions is not included hanging legs
- 4. Blower size for HFCA08 will be 7x8 in when using with optional high static motor



- TC = Total Capacity, MBH
- SC = Sensible Capacity, MBH
- GPM = Water Flow Rate, gpm
- PD = Water Pressure Drop, Ft of Water
- EWT = Entering Water Temperature
- WTR = Water Temperature Rise

## Performance Data - Cooling Capacities Model HFCE04-20

### Cooling Capacity for 3-Row Coil

EWT (F)	Unit Size	Rated Airflow CFM	WTR	Entering Air Temp - EDB/EWB (F)															
				72 / 61			74 / 63			80 / 67			84 / 71						
				TC	SC	GPM	PD	TC	SC	GPM	PD	TC	SC	GPM	PD				
45	04	400	8	8.46	7.29	2.11	5.18	10.04	7.78	2.50	6.97	13.82	9.65	3.44	12.15	18.08	10.80	4.50	19.42
			10	7.51	6.90	1.50	2.85	8.96	7.34	1.79	3.87	12.66	9.18	2.52	7.04	16.85	10.32	3.36	11.58
			12	6.52	6.24	1.08	1.62	7.85	6.90	1.30	2.23	11.48	8.73	1.91	4.31	15.53	9.81	2.58	7.28
	06	600	8	12.04	10.59	3.00	4.10	14.30	11.28	3.56	5.52	19.75	14.00	4.92	9.68	25.93	15.65	6.46	15.56
			10	10.57	9.98	2.11	2.21	12.63	10.61	2.52	3.01	18.00	13.30	3.59	5.56	24.04	14.92	4.79	9.20
			12	8.97	8.56	1.49	1.21	10.88	9.92	1.81	1.69	16.19	12.60	2.69	3.35	21.99	14.15	3.65	5.71
	08	800	8	16.61	15.90	4.14	8.79	19.62	16.98	4.89	11.74	26.76	21.69	6.67	20.17	34.83	23.51	8.68	31.98
			10	14.99	14.26	2.99	4.97	17.80	16.13	3.55	6.69	24.76	20.08	4.94	11.67	32.66	22.52	6.51	19.25
			12	13.29	13.21	2.21	2.93	15.90	15.25	2.64	3.99	22.78	19.18	3.78	7.45	30.32	21.48	5.04	12.25
	10	1000	8	21.50	20.60	5.36	5.94	25.29	22.26	6.30	7.87	34.55	27.03	8.61	13.56	44.81	30.03	11.16	21.37
			10	19.12	18.53	3.81	3.27	22.65	21.08	4.51	4.39	31.70	25.77	6.32	7.87	41.53	28.62	8.28	12.60
			12	16.15	15.75	2.68	1.77	19.81	19.45	3.29	2.53	28.86	24.55	4.79	4.84	38.25	27.36	6.35	7.91
12	1200	8	26.33	24.96	6.56	9.87	30.81	26.55	7.67	12.98	41.53	32.82	10.34	21.85	53.33	36.56	13.29	33.88	
		10	23.83	23.80	4.75	5.60	27.95	25.25	5.57	7.39	38.35	31.38	7.64	12.81	49.72	34.95	9.91	20.17	
		12	21.18	21.15	3.52	3.31	25.03	23.94	4.16	4.42	35.35	30.01	5.86	8.01	46.11	33.37	7.66	12.80	
14	1400	8	30.78	27.86	7.67	4.18	36.34	29.55	9.05	5.57	50.14	36.51	12.49	9.75	65.95	40.67	16.43	15.73	
		10	26.90	26.28	5.36	2.23	31.99	27.81	6.38	3.02	48.07	34.74	9.61	5.56	60.58	38.64	12.07	9.14	
		12	22.58	21.51	3.75	1.20	27.31	25.99	4.54	1.67	40.80	32.95	6.78	3.33	55.11	36.63	9.15	5.62	
16	1600	8	34.00	33.82	1.86	0.36	18.25	17.98	2.43	0.56	33.21	30.15	4.41	1.57	46.59	33.61	6.19	2.83	
		10	36.33	32.13	9.05	6.50	42.78	34.10	10.66	8.64	58.68	42.09	14.62	14.98	76.90	46.91	19.15	24.03	
		12	32.37	30.51	6.45	3.60	38.31	32.28	7.64	4.82	54.10	40.13	10.82	8.66	71.19	44.72	14.19	14.15	
18	1800	8	28.10	26.85	4.67	2.04	33.62	30.45	5.58	2.78	48.84	38.28	8.11	5.32	65.26	42.52	10.84	8.81	
		10	19.62	19.35	2.61	0.74	25.48	24.24	3.39	1.17	41.18	35.43	5.47	2.67	56.55	39.37	7.52	4.62	
		12	38.85	34.76	9.77	7.30	45.61	36.80	11.36	9.65	63.53	45.37	15.57	16.73	81.84	50.45	20.41	26.86	
20	2000	8	34.76	33.11	6.93	4.07	40.96	34.94	8.16	5.41	60.04	43.29	12.01	9.65	75.73	48.09	15.09	15.76	
		10	30.39	29.03	5.05	2.34	36.13	33.05	6.00	3.15	52.09	41.34	8.65	5.95	69.35	45.74	11.52	9.78	
		12	22.19	21.90	2.95	0.92	27.97	26.58	3.72	1.37	44.21	38.43	5.88	3.02	60.19	42.47	8.00	5.15	



เทรน (ประเทศไทย)

เลขที่ 1126/2 ชั้น 30-31 อาคารวานิช 2 ถ.เพชรบุรีตัดใหม่ แขวงมักกะสัน เขตราชเทวี กรุงเทพฯ 10400

☎ 0-2761-1111

